



北新·金邦板

BNBM Fiber Cement Siding

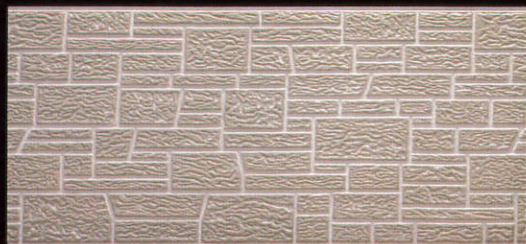


BNBM 北新建材

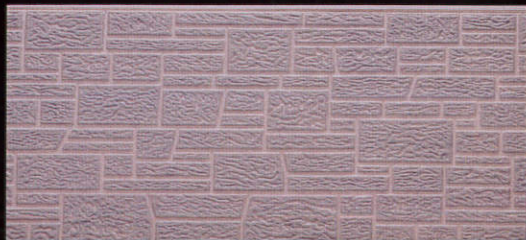
金邦板品种 *Fiber Cement Siding Variety* >>>

S系列 S series

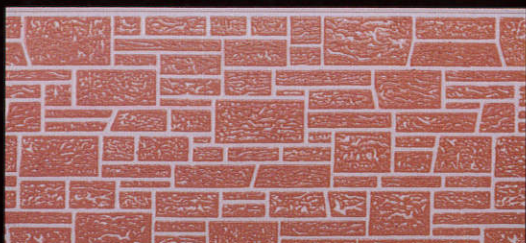
S-4



S-4(1)



S-4(2)

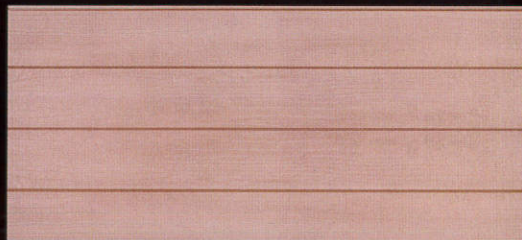


S-4(3)

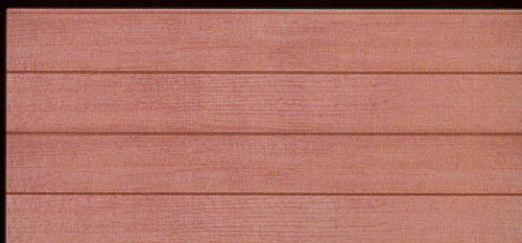
S-5



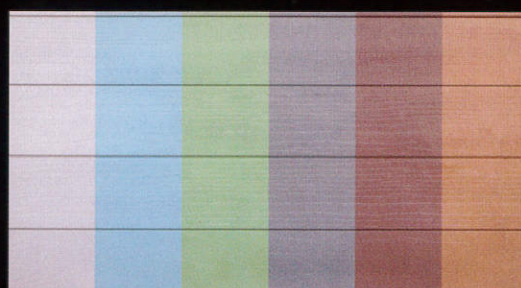
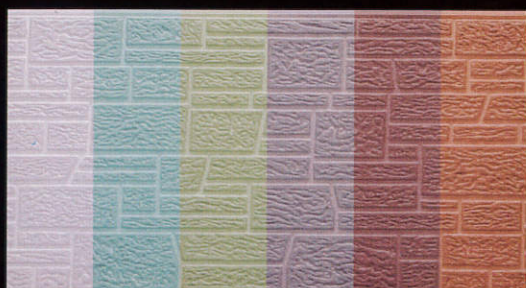
S-5(1)



S-5(2)



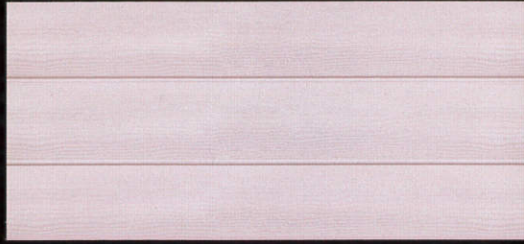
S-5(3)



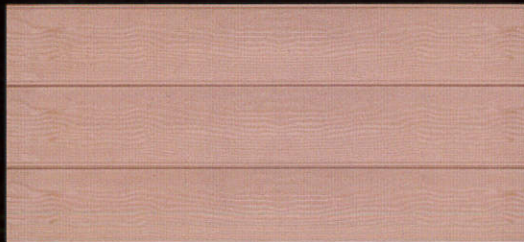
注：图片颜色请以实物为准！

The picture is for reference only, the actual item is the standard.

S-5-2



S-5-2(1)

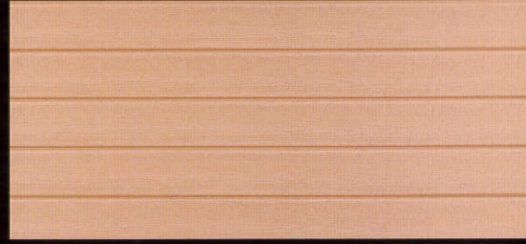


S-5-2(2)



S-5-2(3)

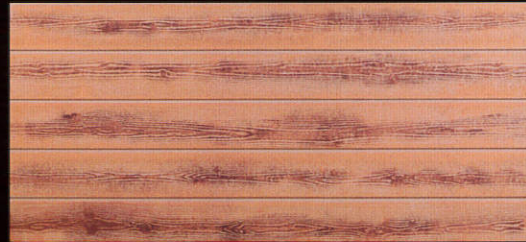
S-5-3



S-5-3(1)



S-5-3(2)



S-5-3(3)



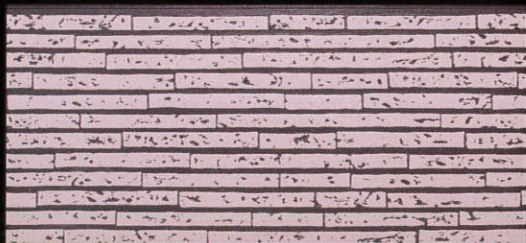
金邦板品种 *Fiber Cement Siding Variety* >>>

S系列 S series

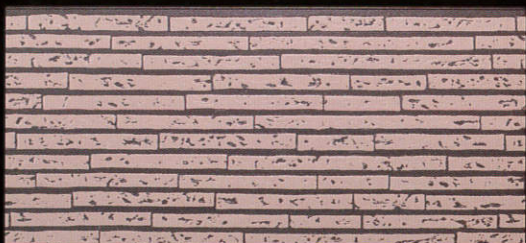
S-6



S-6(1)

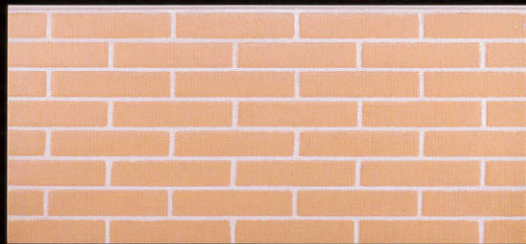


S-6(2)

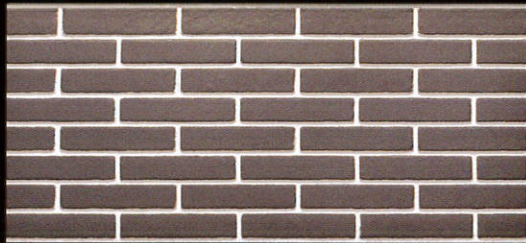


S-6(3)

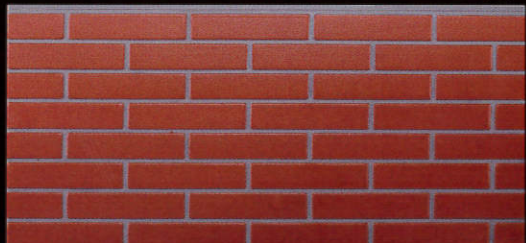
S-7



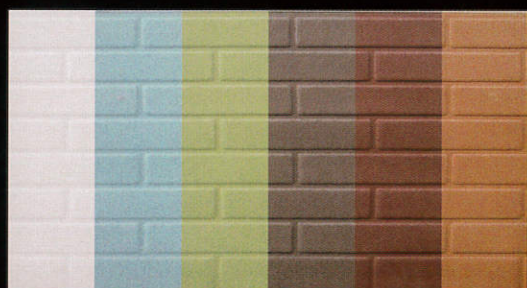
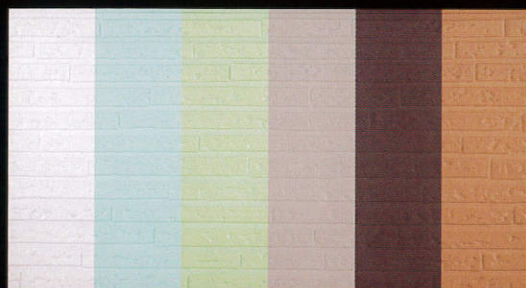
S-7(1)



S-7(2)



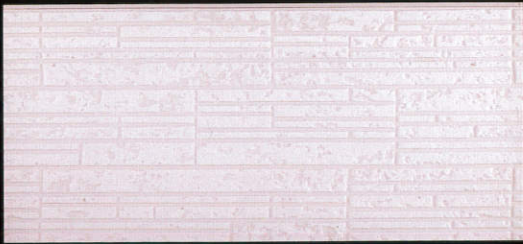
S-7(3)



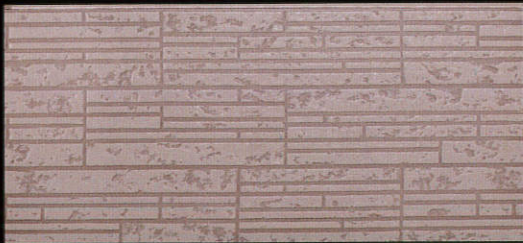
注：图片颜色请以实物为准！

The picture is for reference only, the actual item is the standard.

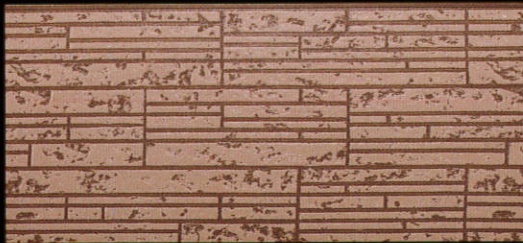
S-8



S-8(1)

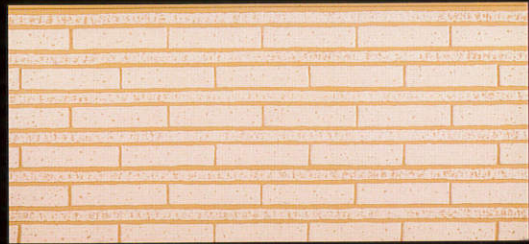


S-8(2)



S-8(3)

S-9



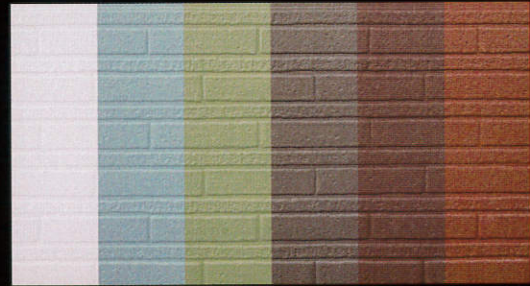
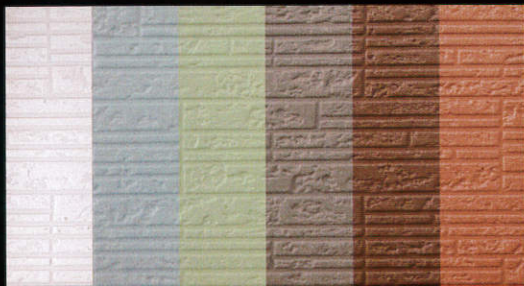
S-9(1)



S-9(2)



S-9(3)



金邦板品种 *Fiber Cement Siding Variety* >>>

S系列 S series

S-10



S-10(1)



S-10(2)



S-10(3)

S-11



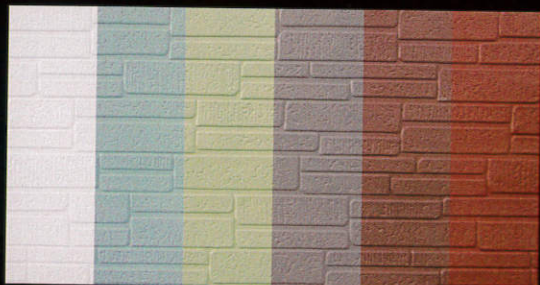
S-11(1)



S-11(2)



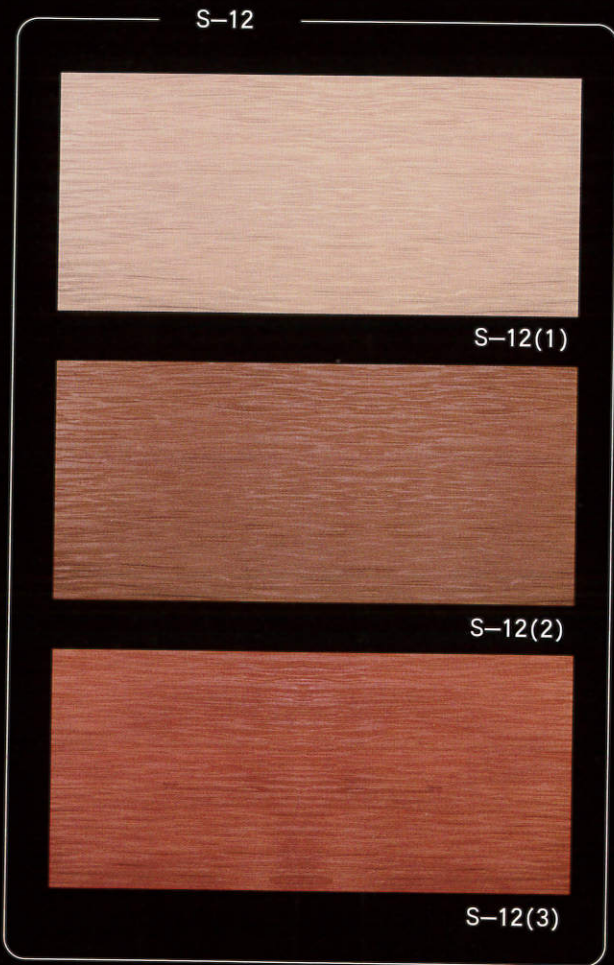
S-11(3)



注：1. 图片颜色请以实物为准！

2. K15-0LSA、K18-0LB、K18-0LSB、K20-0LB均为平板，仅厚度、宽度与K15-0LA不同

K系列 k series



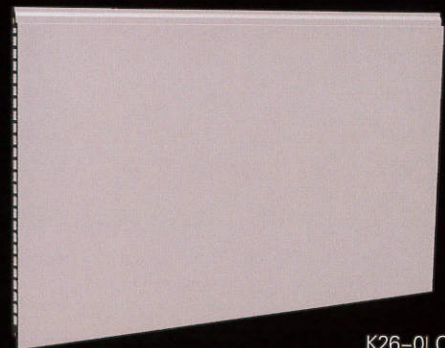
K15-0LA



K18-9LA



K22-2LA (K27-2LB)



K26-0LC

Note: 1. The picture is for reference only, the actual item is the standard.
 2. Products K15-0LSA, K18-0LB, K18-0LSB, K20-0LB have similar figure with product K15-0LA which is flat t

金邦板特点 >>>

BNBM Fiber Cement Siding Excellences

1

绿色环保建材产品

采用零石棉配方，无放射性，为绿色环保建材产品。

Green environmental protection product

It is a green environmental protection product with non-asbestos.

2

图案多样，色彩丰富

多种花色图案与表面涂装颜色任意组合，色彩丰富，为设计师提供广阔的创意空间。

Multiplicity in design and rich in color

The variety of designs and color can be freely combined, and provide more originality to the stylist.

3

抗震性能优越

金邦板安装采用企口连接、卡件固定，板材与主体结构之间为非刚性固定状态，具有良好的抗震性能，适用于地震多发区。

Flexible connection

Special technique is used for the joints of BNBM fiber cement siding, so the connection between boards and the main part of wall is not a rigid one with excellent aseismatic preformens. It can used in earthquake zone.

4

耐候及力学性能良好

金邦板密实度高，尺寸稳定；力学、耐候性能优越，变形系数极小。

Mechanical performance and antiweatherability

It has a heavy density and excellent mechanical performance, antiweatherability and freezing resistance, excellent dimensional stability.

5

优良的保温、隔热、隔声、防火性能

具有优良隔热保温、隔声性能，且为不燃材料，适用于工业与民用建筑及路桥声屏障。

Insulation and fireproof performance

BNBM Fiber Cement Siding have excellent insulation and fireproof performance and has been used in noise barriers.

6

安装方便

金邦板采用企口连接、卡件固定的安装方式，方便快捷；干法作业，施工不受季节影响。

Installing easily

T & G joint have good capability in water and rain prevention, and clips-fixed installation makes it easy to be installed. Little seasonal inflection is caused in the construction.

7

应用广泛

金邦板可广泛应用于外墙装饰、外墙外保温、既有建筑的节能改造、隧道、地铁车站等工程。

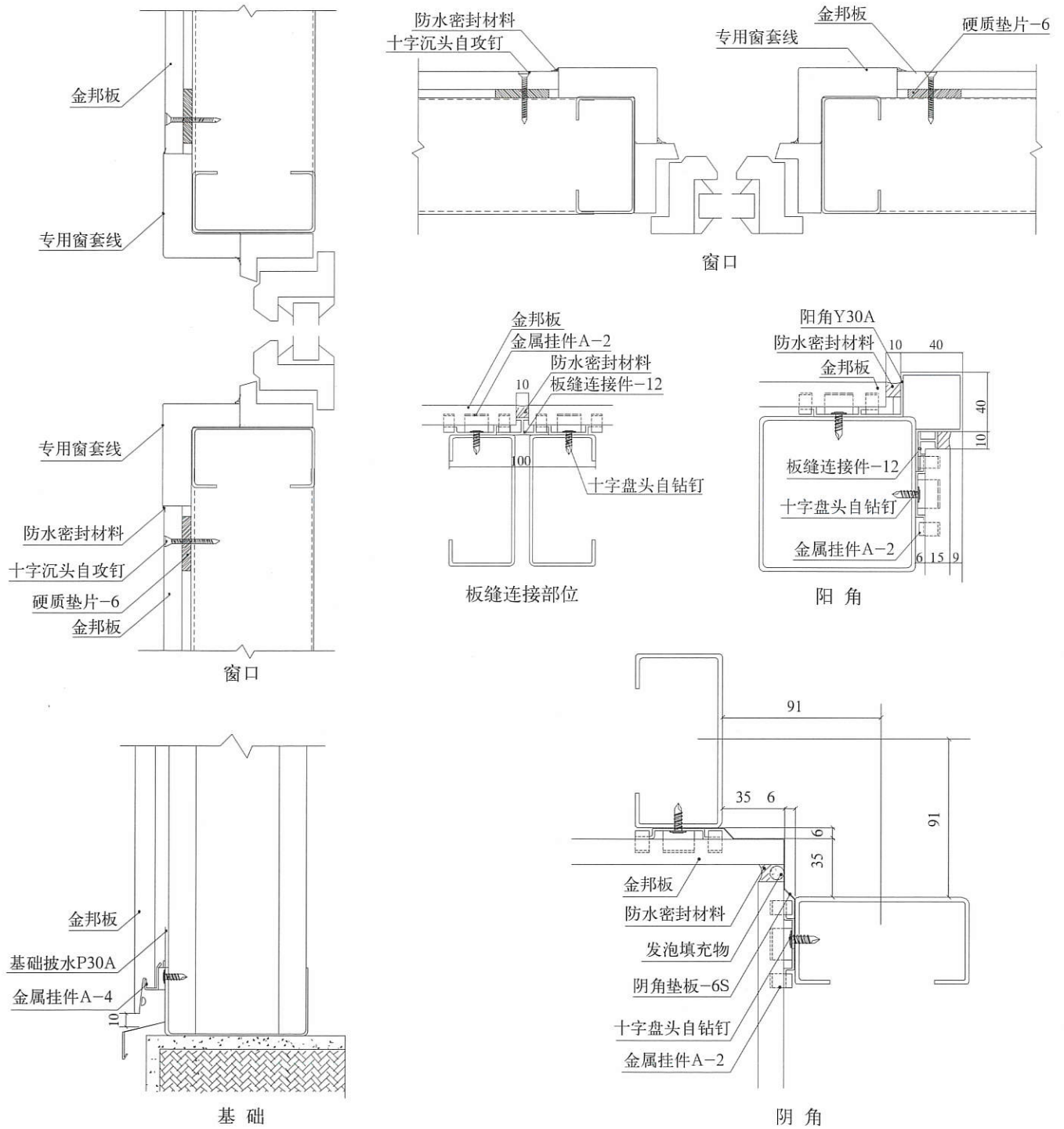
Wide application range

BNBM fiber cement siding is available in different condition, such as decorative wall, exterior wall heat preservation, Existing energy-saving buildings, Tunnels, subway station.



金邦板安装节点示意图 >>>

Fiber Cement Siding Installation Diagram





BNBM 北新建材

总部地址：中国北京市海淀区西三旗建材城西路16号 100096

工厂地址：苏州工业园娄葑北区扬东路9号 215000

销售电话：0512-67151255 / 1257 010-82982672 / 2673

技术支持：010-82982773 / 2510

总 机：010-82982288

传 真：0512-67253638 010-82928465

电子邮箱：jbsale@bnbm.com.cn

网 址：www.bnbm.com.cn